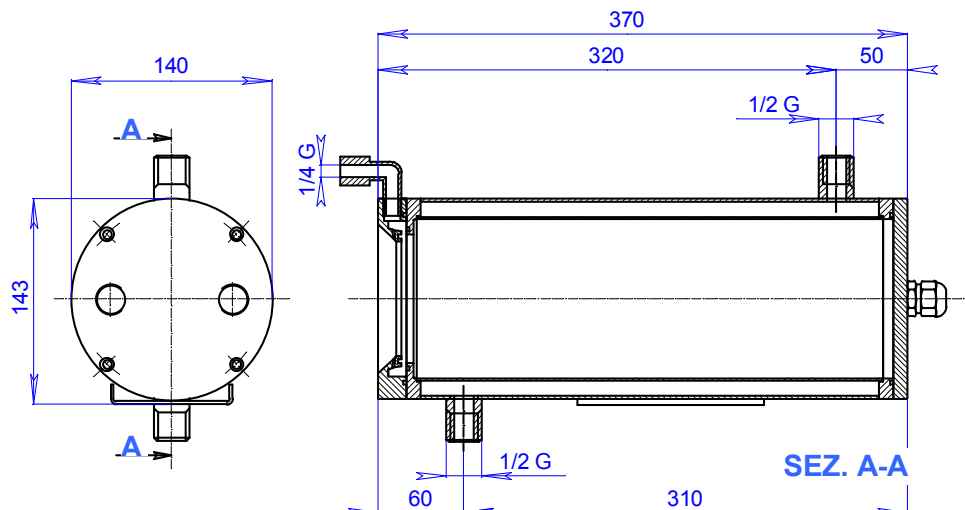


CRL 150



- ❑ **Body** made in stainless steel AISI 316, with cylindrical chamber for internal circulation of cooling liquid linked to an external circuit.
- ❑ **Front cover** On back cover there are 2 metallic cable glands PG 13,5. On the front cover the glass is
Back cover stopped by mechanical device and standard air barrier (max. temp. 300°C).
- ❑ **Internal useful** mm. 78(B) x 78(H) o Ø 95 , useful length mm. 280.

accessories upon request	power supply (AL150/A and AL150/B), toughened glass (max. temp. 680°C) AGF150 air filter group.
-------------------------------------	--

Technical notes:

- All the screws of the housing are made of stainless steel..



phone +39.(0)445.396190



fax +39.(0)445.395000

Specifications are subject to change without notice, weights and dimensions are indicative.