

SV-32 Appliance

LAUNCH WEBINAR

Erick Ceresato

Product Marketing Manager

Muhanad Jamjum

Product Manager

Agenda

- Product Positioning & Availability
- Key Features & Specifications
- Price Structure, Logistics, & Support Overview
- Q&A

PRODUCT POSITIONING, & AVAILABILITY

Overview

- Turnkey Network Security Appliance powered by Security Center
- The appliance eliminates the need for a separate client workstation (support for local viewing and recording capabilities)
- Strong fit for Banking/Retail customers, particular those with multi-site requirements
- New Installer Assistant tool will be available on all SV appliances
- Video-Only (Security Center Omnicast) at launch
- Support for Access Control currently planned for later in 2014



SV-Line Portfolio Recap



SV-16

Up to 16 Cameras
Up to 1TB Storage



SV-32

Up to 32 Cameras
Up to 4TB Storage



SV-PRO

Up to 100 Cameras
Up to 12TB Storage

Key Capability Overview

- **Decode and Record Up to 32 Cameras** Eliminate the need for a dedicated client workstation with the ability to record and decode up to 32 cameras simultaneously
- **Small & Fanless Design** Convenient form factor for small sites that are not equipped with a server room
- **Simple, Turnkey System** Pre-loaded appliance and Installer Assistant tool to facilitate system deployment
- **Standardize Multi-Site Systems** Centralize monitoring of SV-32 systems with Genetec's advanced Federation capability
- **Security Center Mobile & Plan Manager Support** Security Center Mobile Server and Plan Manager come installed on the SV-32. Stream up to 5 video streams to mobile devices and view up to 3 maps simultaneously

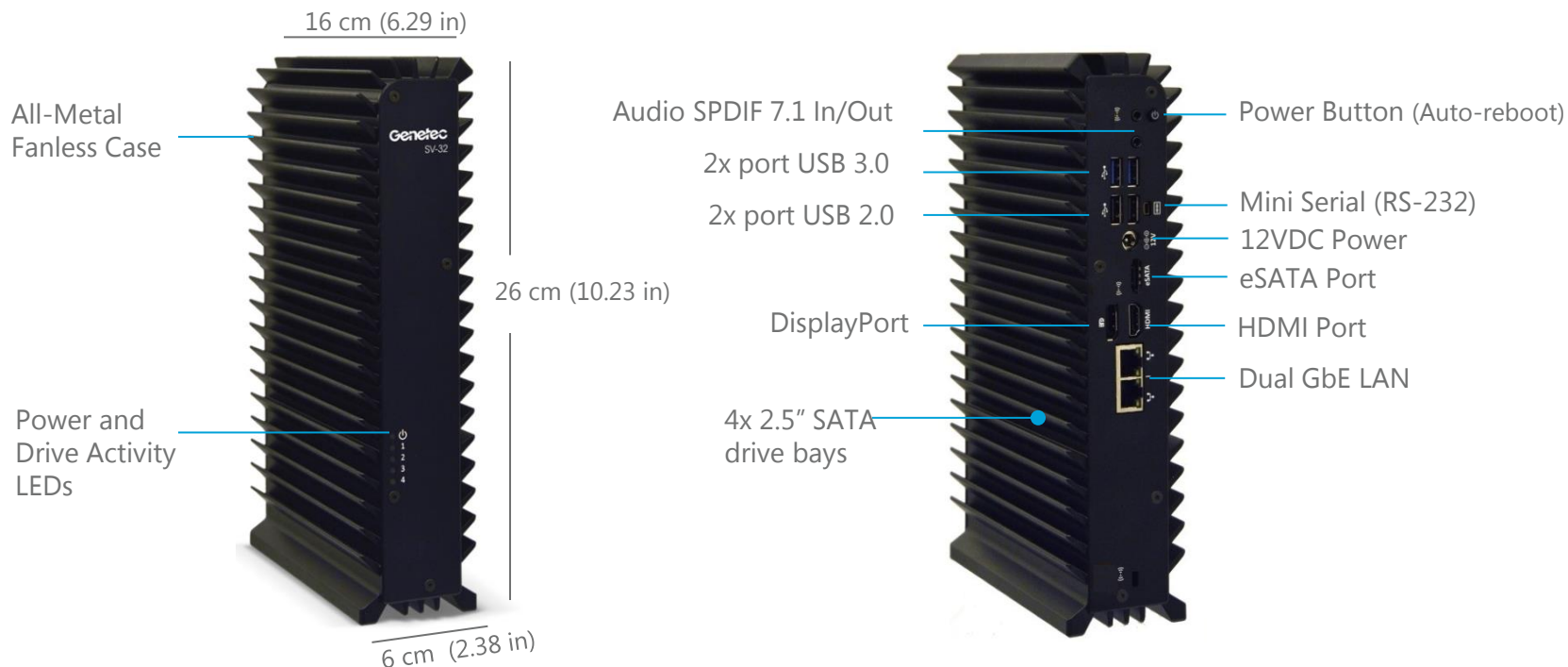
SV-32 Availability

- Official GA on June 2nd, 2014
- Global availability at launch, with some restrictions
- Not available in Middle East, Africa, China, Taiwan, Korea, Russia
- Channel partners in Australia, New Zealand and Japan must source local power supplies

FEATURES & SPECIFICATIONS



SV-32 Appliance Overview



Detailed Hardware Specification

SV-32 Technical Specifications		Mechanical and Environmental Specifications	
Operating System	Windows 7 Embedded Standard (64 bit)	Power	9.5 to 15 volt input
CPU	Intel Core i7-3555LE 64 bit dual core 2.5GHz	Consumption	Up to 35W
Memory	8GB DDR3	Operating Temperature	0°C to 45°C
Peripherals	1x RS-232	Operating Humidity	10% to 90% (non-condensing)
	2x USB 3.0, 5 Gbps	Dimensions (W×D×H)	10.23× 6.29 × 2.36 in (260 × 160 × 60 mm)
	2x USB 2.0, 480 Mbps	Certifications	CE, FCC
Display	HDMI output up to 1920 x 1200		
	DisplayPort up to 2560 x 1600		
Ethernet	2x GbE ports		
Audio	7.1 channel S/PDIF		
Internal Storage	(2x 1TB or 4x 1TB) 2.5-in SATA hard drive 60GB mSATA SSD drive		
External Storage	Network Attached Storage (NAS) or external SATA drive (eSATA)		

Sample Decoding Scenarios

System Design sheet
Available on Genetec
Channel Partner Portal

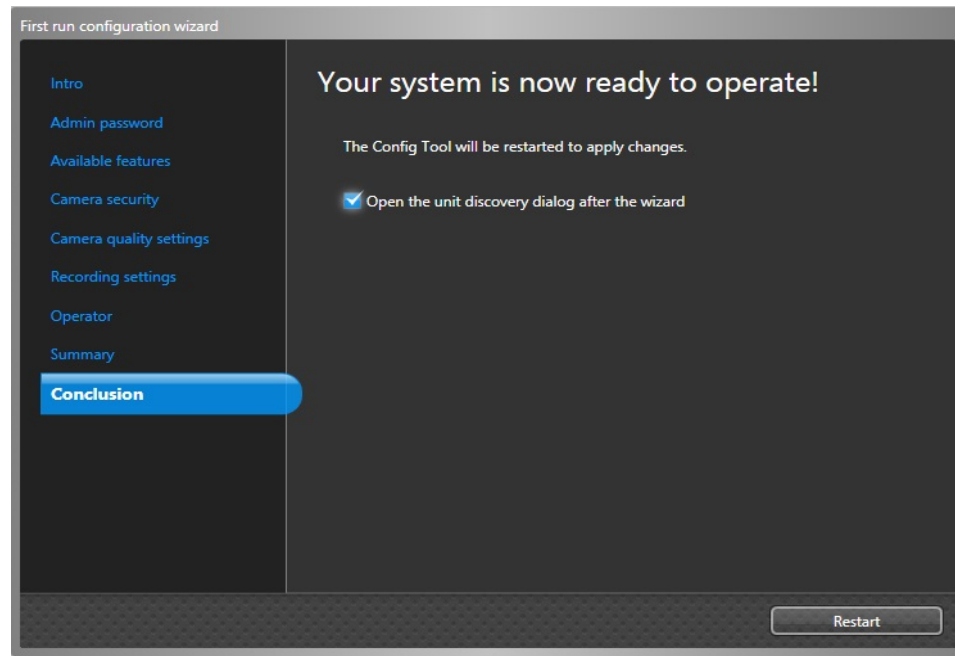
Resolution	5 FPS	15 FPS	30 FPS
640 x 480	32 cameras @600 kbps	15 cameras @1200 kbps	9 cameras @2000 kbps
1280 x 720	32 cameras @700 kbps	10 cameras @1500 kbps	5 cameras @2500 kbps
1920 x 1080	16 cameras @1200 kbps	5 cameras @3000 kbps	3 cameras @3000 kbps

- Enabling Dynamic Stream Selection is recommended for cameras that support Multistreaming

New Installer Assistant Tool

First-run Wizard

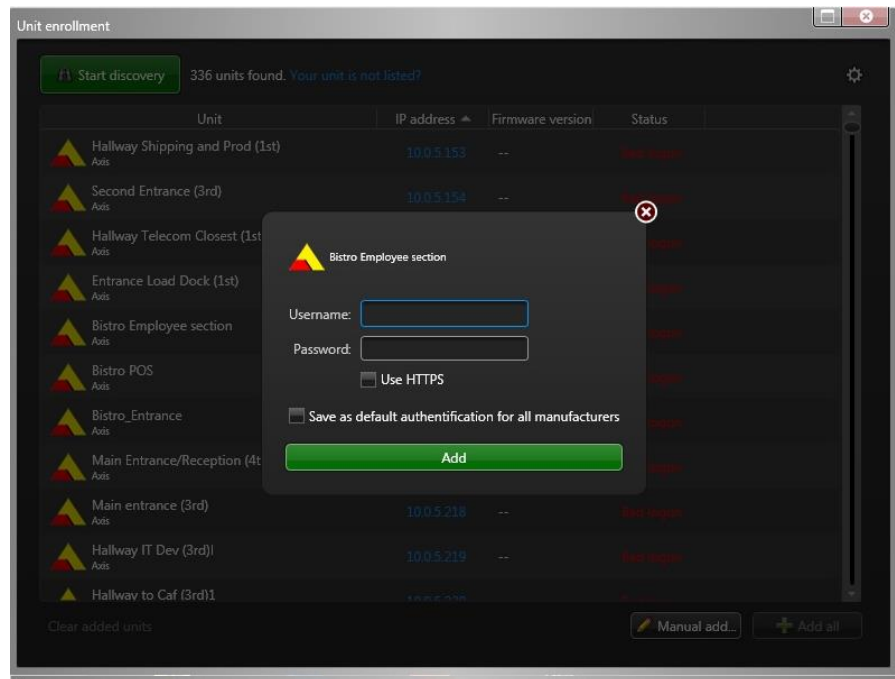
- **Setting the Admin Password**
- **Turn on/off available features**
- **Assign specific Camera login**
- **Camera quality settings**
- **Recording settings**
- **Add operators**



New Installer Assistant Tool

Unit enrollment tool

- Auto discover and manual enrollment of network cameras
- Notify user of discovery
- Ability to ignore specific cameras
- Specify Camera manufacturer
- Capability to add cameras manually



PRICE STRUCTURE, SUPPORT, & LOGISTICS

SV-32 Price structure

Price list Available on
Genetec Channel
Partner Portal

**Base Package
(HW + SC
standard
package)**

2TB Flavor

SV32-2TB-GSC-OM

4TB Flavor

SV32-4TB-GSC-OM

**Connection
licenses**

Camera Connections

SV32-1C-GSC

Mobile Connections

SV32-1MobileU-GSC

2TB Demo (45% off)

SV32-Demo

(HW + Base Package +32
cameras + 5 Mobile
Client)

Warranty and Support

Hardware Warranty

- **Duration: 3 years**
- **HDD troubleshooting tools**

(Intel Rapid Storage Technology tool &
Western Digital Data Lifeguard Diagnostic tool)

- **Advanced Replacement option**

Software Warranty

- **Duration: 3 years**
- **GTAC business hours**

Monday through Friday, 8am to 8pm Eastern Time

- **GTAP Access**
- **Access to service releases and hotfixes**
- **SMA recommended**

Access to all major software updates and extended support hours

Rollout and logistics

**Standard Lead time of
4-7 Business days for
quantities under 5
units**

Will begin to ship on June 2nd

- Security Center 5.2 SR6
- Mobile Server
- Plan Manager

Product Packaging

- Dimensions: 12.5x9.5x3 in
- Weight: 6.6 lbs
- Box dimension and weight varies for volume shipments

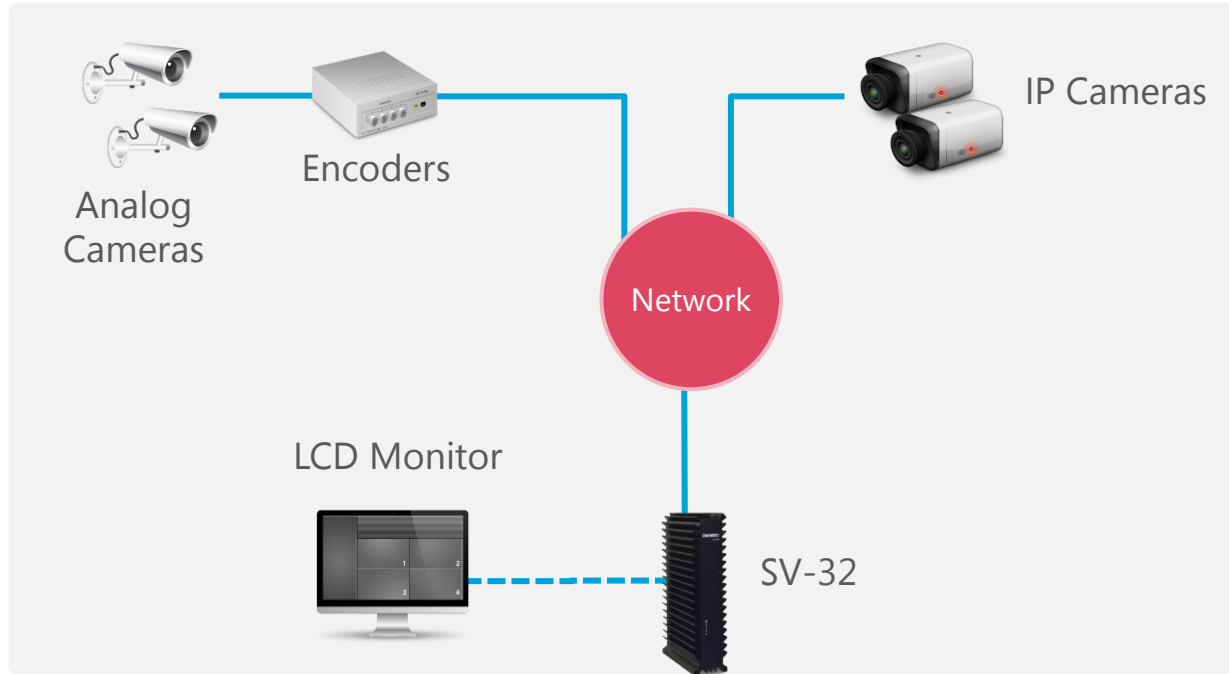


Units will ship from Canada, UK, and US

THANK YOU QUESTIONS ?

CONTACT SALES@GENETEC.COM FOR MORE INFO

Single Site High Level Architecture



Multi-Site High Level Architecture

