



InControl 2

Zero Touch Configuration options

InControl 2

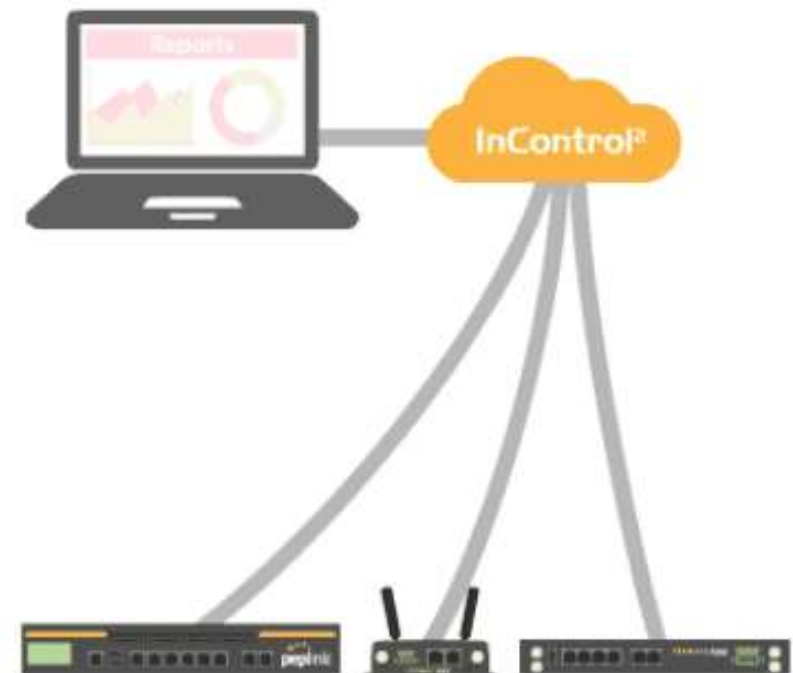
SD-WAN Controller: incontrol2.peplink.com

Cloud Based Monitoring, Configuration and Management system

- Zero-Touch Configuration options
- SD-WAN deployment from the cloud
- Comprehensive Reporting made available
- Included with Device warranty = Value Added

InControl²

Setup. Manage. Report.



InControl 2



Advantages and Features



Zero-Touch Configuration options

- Bulk Configurator
- Device IP options
- Firewall Settings
- Outbound Policy
- Wi-Fi Options
- Captive Portal



Comprehensive GPS Management options

- Realtime playback
- Road conditions
- Cell coverage
- GeoFencing
- Downloadable for 3rd party apps



Simple-to-Use SD-WAN Provisioning

- Scalable Provisioning
- Same Options as Manual UI
- Easy to Verify and Manage



Network Diagnostics and Reports

- Detailed reporting options
- Bandwidth, Client Usage, LAN Clients and more!
- Remote Web Admin Access

InControl 2: Zero Touch Configuration



Options Overview



Bulk Configurator

Master Config File pushed to your Peplink Devices.

63.138.197.58



Remote Device IP Configuration

Pre-built Config File pushed to your Peplink Devices.



Bulk Outbound Policy Configuration

Extract Traffic Steering rules from a config file to apply to your Peplink Devices.



Bulk Firewall Policy Configuration

Extract firewall policies from a config file to apply to your Peplink Devices.



Centralized Firmware Management

Schedule firmware updates for your Peplink Ecosystem.



Centralized SSID Options

Create and Manage network Wi-Fi options.



Customized Captive Portal

Create and Manage a completely customizable Landing Page.

InControl 2

Companion App

Monitor and manage your Peplink / Pepwave network from anywhere with the **InControl Mobile Companion app**.

Anywhere you go, you can now check the health of your entire network on your mobile device.

- Save your most commonly accessed groups across all organizations on the **favorite screen**.
- **Check the connection status** of any device, the **clients** they are connected to, and **all activity** affecting the group.
- **Remote Web Admin** to directly access the UI of your Peplink unit



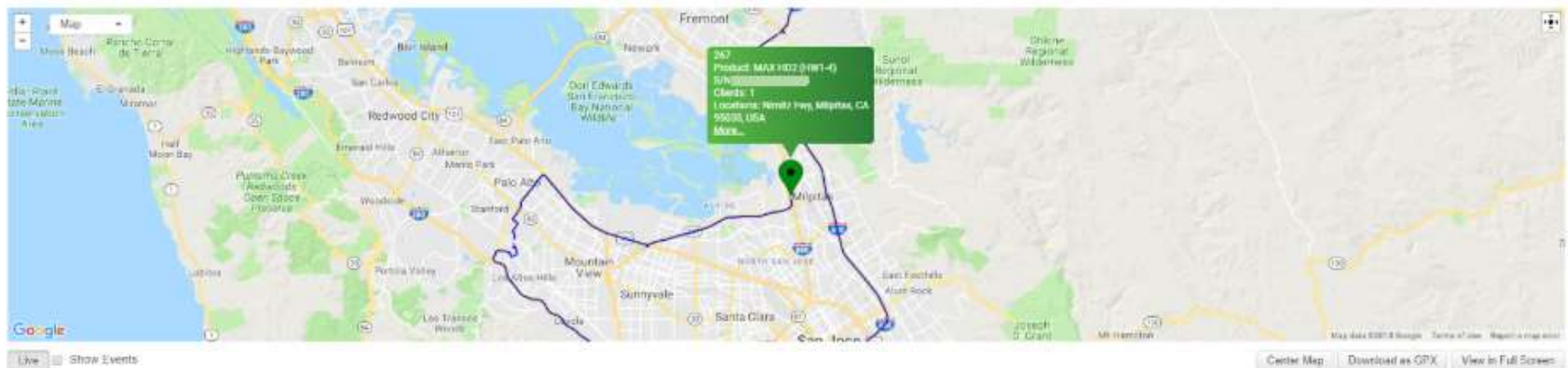
InControl 2 - GPS

Cloud based Monitoring and Management



InControl 2 provides full-fleet device management when used in combination with our vehicle-mounted, GPS-enabled devices, such as the MAX HD2 and BR1. Track locations using our interactive maps, check vehicle speed, cellular coverage, and traffic conditions. Play back route histories in real-time.

Map



InControl 2 - Geo-fencing

Location based event triggers

Geo-fencing: InControl 2 allows you to define an area by circle or outline a path on a map; when a device crosses that area, InControl 2 can trigger an action item

Requirements:

- GPS enabled **Peplink**
 - **HD or BR series**
- Current firmware installed
- Active **InControl 2** account

Configuration:

- **Group Level**
 - **Settings**
 - **Geo-fencing**

